

## Monthly Weather Summary in Thailand February 2022

The average total rainfall over Thailand in February was 102.6 mm that was 82.3 mm (405%) higher than normal and monthly mean temperature was 26.1 °C with 0.3 °C below normal. Due to the high pressure area from China periodically extended its ridge to cover upper Thailand throughout the month in addition with the prevailing of the westerly wind in the upper level over the upper northern part during early month. These caused cool weather over upper Thailand with cold weather in several areas of northern and northeastern parts, especially during late month that high pressure area from China was active inducing temperature decreased and successive cool weather almost the areas of upper Thailand with cold weather in most of northeastern part resulting in month mean temperature over Thailand was below normal. For rainfall, there was rainfall over upper Thailand during early and middle of the month that effected by the westerly trough moving to cover northern and upper northeastern parts accompanied with the southerly and southeasterly winds prevailed over upper Thailand during this time. In southern part, due to the prevailing of the easterly wind, the low pressure cell covered the area near Sumatra during February 15-17 and the active low pressure cell covered Malaysia during February 24-26 causing rainfall in southern part almost the month and heavy to very heavy rainfall in several areas mainly during the second half of the month. Monthly total rainfall was above normal rainfall in all region i.e. northern part 43.3 mm (442%), northeastern part 28.4 mm (187%), central 50.1 mm (407%), eastern part 61.9 mm (220%), southern part (east coast) 255.7 mm (646%) and southern part (west coast) 110.0 mm (373%).

**1–10 February:** The weak high pressure area covered northeastern part and the South China Sea during early period after that the another high pressure areas from China extended its ridge to cover the mentioned areas. In addition, the westerly wind at high altitude prevailed over the upper northern part almost the period. These conditions caused cool and cold weather in northern and northeastern parts while cool weather was present in several areas for the rest parts. The lowest minimum temperature of the period was 6.9 °C, at Umphang in Tak province on February 1. In the mountainous areas and mountain tops, minimum temperature dropped to 2.6 °C at Angkhang Royal Agricultural Station in Chiang Mai province on February 4. For rainfall, due to the prevailing of the southerly and southeasterly winds over upper Thailand and the passage of the westerly trough over northern part during mid-period resulted in unusual rainfall in upper Thailand mainly during the first half of the period. The maximum daily rainfall in upper Thailand was 93.0 millimeter at Phu Luang in Loei province on February 2 with hail occurred at Mae Hong Son province on February 5 and Chiang Rai province on February 6. In southern part, the easterly wind prevailed over the southern part causing scattered rain almost the period. The highest daily rainfall was 70.5 millimeters at Tha Chana in Surat Thani province on February 6 and flash flood was reported in Pattalung province on February 4.

**11-20 February :** The weak high pressure area covered northern, northeastern parts and the South China Sea during early period. The another high pressure area from China extended its ridge to cover the mentioned areas since mid-period and later weakened. These conditions caused cool and cold weather in northern and northeastern parts especially cold weather in several areas in the upper portion of northern part during the first half of the period while cool weather was present in some areas for the rest parts. The minimum temperature was 10.4 °C at Agrometeorological Station in Chiang Rai province on February 11. In the mountainous areas and mountain tops, cold to very cold weather was reported and the temperature climbed down to 3.0 °C at Angkhang Royal Agricultural Station in Chiang Mai province on February 14. For rainfall, with the passage of the westerly trough over northern and upper northeastern parts during early and late periods and the prevailing of the southerly and southeasterly winds over upper Thailand almost the whole period caused scattered rain in northern and northeastern parts mainly during the second half of the period while fairly widespread rain was found in central and eastern parts almost the period. The maximum daily rainfall in upper Thailand was 103.0 millimeter at Agrometeorological Station in Chiang Rai province on February 11 with reports of the gusty wind at Pichit province on February 11, at Ang Thong province on February 12, at Chaiyaphum and Khon Kaen province on February 13 and flash flood occurred at Kamphaeng Phet province on February 15. In southern part, with the prevailing of the easterly wind during the first half of the period and the southeasterly wind during second half of the period. Moreover, the low pressure cell covered Sumatra during mid-period. These caused scattered to fairly widespread rain almost the period. The highest daily rainfall of 170.0 millimeter was measured at Noppitum in Nakhon Si Thammarat province on February 15 and flash floods were reported at Nakhon Si Thammarat, Prachuap Khiri Khan and Phatthalung provinces on February 15-17 with gusty wind at Trang province on February 19.

**21-28 February :** The high pressure area covered upper Thailand and the South China Sea during early period. The another active high pressure area from China extended its ridge to cover the mentioned areas during mid-period and later weakened causing temperature decreased from last period which experienced cool weather nearly the whole areas over upper Thailand with cold weather in northern and northeastern parts. The lowest temperature was 8.4 °C at Umphang in Tak province on February 26. Cold to very cold weather in mountainous areas and mountain tops with the lowest temperature of 3.0 °C at Kiew Mae Pan, Doi Inthanon in Chiang Mai province on February 4. For rainfall, isolated to scattered rain was found in upper Thailand mainly in central and eastern parts during early period that effected by the southeasterly wind prevailing over upper Thailand during that time. The highest daily rainfall in upper Thailand was 57.0 millimeter at Khlung in Chanthaburi province on February 21. In southern part, the easterly and northeasterly winds which prevailed over the Gulf of Thailand and southern part was strengthened since the mid-period accompanied with the active low pressured cell covered Malaysia on February 24-26 causing scattered to fairly widespread rain nearly the whole period.

The maximum daily rainfall was 369.2 millimeter at Janae in Narathiwat province on February 25 and floods occurred at Nakhon Si Thammarat, Phatthalung, Pattani, Narathiwat and Yala provinces during the second half of the period with gusty wind was reported at Surat Thani, Nakhon Si Thammarat, Songkhla, Pattani and Narathiwat provinces on February 24-26.

---

**Note** : Rainfall, temperatures and natural disasters in this report were updated up to March 3, 2022.

Climatological Center  
Meteorological Development Division  
Meteorological Department

Monthly Current Report  
Rainfall and Accumulative Rainfall  
February 2022

Northern Thailand

Station	Temperature ( °c)		Rainfall (mm)		Accumulative rainfall (mm) Since 1 January	
	Mean	Above or below normal	Actual	Above or below normal	Actual	Above or below normal
Chiang Rai	22.0	0.1	41.5	28.8	130.5	101.3
Mae Hong Son	22.7	0.0	20.3	14.8	32.2	15.7
Phayao	23.6	0.6	26.6	19.2	56.1	34.4
Chiang Mai	24.7	0.5	33.9	24.3	60.6	39.7
Tha Wang Pha	23.8	1.1	53.9	46.2	91.2	68.5
Nan	24.8	0.9	40.9	32.1	52.1	29.0
Lamphun	24.4	-0.1	33.3	28.9	59.0	46.1
Lampang	25.1	0.2	15.0	6.3	50.8	27.4
Mae Sariang	22.9	0.2	6.8	1.3	24.4	7.9
Phrae	25.1	0.5	48.8	37.1	74.6	49.5
Uttaradit	25.9	-0.3	94.0	83.1	104.1	83.4
Bhumibol Dam	25.3	-1.3	106.4	100.1	108.6	94.1
Tak	26.1	-1.1	74.8	68.1	75.2	59.5
Mae Sot	25.0	0.1	46.6	39.8	74.5	60.2
Umphang	22.9	0.9	114.0	103.8	121.1	102.0
Phitsanulok	26.4	-0.4	114.6	98.0	116.3	92.7
Lom Sak	25.9	-0.2	13.5	-2.8	30.0	6.9
Phetchabun	26.5	0.0	26.3	10.9	39.0	12.8
Wichian Buri	26.6	-0.9	13.4	0.6	24.6	-2.0
Kamphaeng Phet	26.2	-0.6	137.6	124.8	152.7	134.6
Over the area	24.8	0.0	53.1	43.3 442%	73.9	53.2 257%

Northeastern Thailand

Station	Temperature ( °c)		Rainfall (mm)		Accumulative rainfall (mm) Since 1 January	
	Mean	Above or below normal	Actual	Above or below normal	Actual	Above or below normal
Nong Khai	23.7	-1.3	148.4	131.0	174.6	146.6
Loei	23.3	-1.0	74.1	60.2	87.5	66.0
Udon Thani	23.9	-1.3	24.9	3.7	25.2	-2.4
Nakhon Phanom	23.2	-1.3	21.7	0.4	28.2	3.0
Sakon Nakhon	22.8	-1.6	38.8	11.4	40.4	6.9
Mukdahan	23.5	-1.5	36.6	18.6	41.2	20.2
Khon Kaen	24.6	-1.3	45.2	27.9	49.0	25.7
Kosum Phisai	25.0	-1.0	20.7	7.0	20.7	0.0
Roi Et	24.8	-1.0	8.8	-2.5	22.8	4.6
Chaiyaphum	25.7	-1.0	23.7	16.5	47.8	31.7
Ubon Ratchathani	25.7	-0.8	42.2	31.3	44.2	30.1
Tha Tum	25.4	-0.8	23.5	11.6	28.1	7.8
Surin	25.8	-0.7	71.5	61.9	72.5	56.3
Nakhon Ratchasima	26.2	-0.8	8.1	-4.6	10.0	-11.3
Chok Chai	26.1	-0.5	37.9	26.3	38.0	17.7
Nang Rong	25.4	-0.9	71.6	53.9	72.4	49.9
Over the area	24.7	-1.0	43.6	28.4 187%	50.2	28.3 129%

- NOTES :
- 1) Mean temperature is the average of daily dry-bulb temperature
  - 2) "T" is trace, rainfall amount less than 0.1 mm.
  - 3) "blank" is incomplete data.
  - 4) Temperature and rainfall are preliminary data.

Monthly Current Report  
Rainfall and Accumulative Rainfall  
February 2022

Central Thailand

Station	Temperature ( °c)		Rainfall (mm)		Accumulative rainfall (mm) Since 1 January	
	Mean	Above or below normal	Actual	Above or below normal	Actual	Above or below normal
Nakhon Sawan	27.2	-0.8	71.4	59.1	100.3	82.4
Bua Chum	26.5	-0.9	2.0	-6.6	67.4	47.5
Lop Buri	27.7	-0.5	20.5	11.9	24.9	6.6
Suphan Buri	27.6	-0.1	17.4	11.8	17.8	7.3
Thong Pha Phum	26.9	0.0	46.5	35.0	48.3	29.7
Kanchanaburi	27.9	-0.3	130.8	112.5	132.2	106.3
Bangkok Airport	27.8	-0.8	95.3	83.4	124.4	96.1
Bangkok Metropolis	28.5	0.0	115.3	93.9	149.7	104.7
Over the area	27.5	-0.4	62.4	50.1 407%	83.1	60.0 260%

Eastern Thailand

Station	Temperature ( °c)		Rainfall (mm)		Accumulative rainfall (mm) Since 1 January	
	Mean	Above or below normal	Actual	Above or below normal	Actual	Above or below normal
Prachin Buri	28.2	-0.2	70.6	56.9	77.6	56.2
Kabin Buri	27.1	-0.6	42.0	22.0	47.7	13.0
Aranyaprathet	27.8	-0.5	131.1	106.3	140.6	105.2
Chon Buri	28.1	-0.2	50.6	35.9	52.4	20.1
Ko Sichang	27.3	-0.4	38.1	18.8	58.6	17.7
Pattaya	27.1	-0.2	82.0	62.1	132.8	97.4
Sattahip	27.2	-0.2	165.6	143.6	217.5	162.7
Rayong	27.7	-0.1	47.3	15.1	94.7	33.2
Chanthaburi	27.6	0.2	117.2	81.8	136.9	73.5
Khlong Yai	27.9	0.6	156.1	76.3	208.4	77.5
Over the area	27.6	-0.2	90.1	61.9 220%	116.7	65.6 128%

- NOTES :
- 1) Mean temperature is the average of daily dry-bulb temperature
  - 2) "T" is trace, rainfall amount less than 0.1 mm.
  - 3) "blank" is incomplete data.
  - 4) Temperature and rainfall are preliminary data.

Monthly Current Report  
Rainfall and Accumulative Rainfall  
February 2022

Southern Thailand, east coast

Station	Temperature ( °c)		Rainfall (mm)		Accumulative rainfall (mm) Since 1 January	
	Mean	Above or below normal	Actual	Above or below normal	Actual	Above or below normal
Phetchaburi	27.3	-0.2	158.9	154.7	209.6	188.8
Hua Hin	27.3	0.0	172.7	158.9	192.6	153.8
Prachuap Khiri Khan	26.9	0.0	298.8	277.4	306.8	240.0
Chumphon	26.9	0.1	291.8	240.5	312.5	164.5
Surat Thani	26.5	-0.2	227.1	209.1	242.9	154.4
Ko Samui	27.7	0.3	248.8	185.1	275.4	85.2
Nakhon Si Thammarat	26.7	0.1	481.6	404.8	519.0	179.9
Songkhla	27.8	0.3	230.4	175.4	322.0	139.8
Hat Yai Airport	27.0	0.2	231.6	201.5	318.2	200.0
Pattani Airport	27.0	0.3	370.0	334.0	371.1	240.9
Narathiwat	26.7	0.1	536.1	471.3	565.5	309.4
Over the area	27.1	0.1	295.3	255.7 646%	330.5	186.9 130%

Southern Thailand, west coast

Station	Temperature ( °c)		Rainfall (mm)		Accumulative rainfall (mm) Since 1 January	
	Mean	Above or below normal	Actual	Above or below normal	Actual	Above or below normal
Ranong	27.5	-0.1	156.8	137.3	170.6	110.0
Takua Pa	27.3	0.2	212.9	167.9	212.9	105.8
Phuket	29.3	0.3	100.3	77.0	106.3	33.1
Phuket Airport	27.9	0.0	115.2	83.9	146.6	49.1
Ko Lanta	28.3	0.0	112.6	89.2	114.2	61.1
Trang Airport	27.6	-0.1	160.6	136.3	221.7	140.2
Satun	28.2	0.0	117.9	78.3	119.1	35.9
Over the area	28.0	0.0	139.5	110.0 373%	155.9	76.4 96%

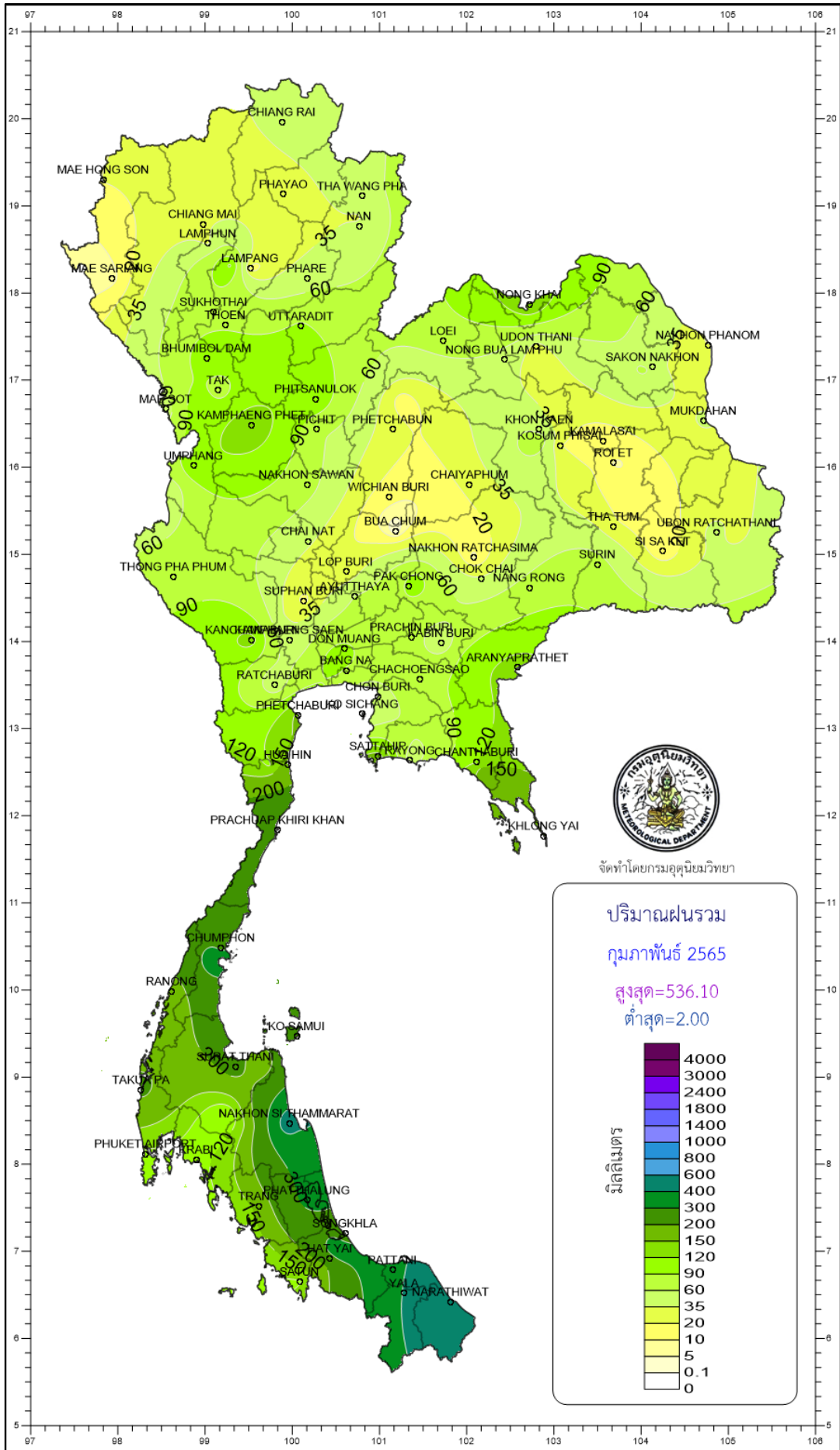
- NOTES :
- 1) Mean temperature is the average of daily dry-bulb temperature
  - 2) "T" is trace, rainfall amount less than 0.1 mm.
  - 3) "blank" is incomplete data.
  - 4) Temperature and rainfall are preliminary data.

**Monthly Current Report**

**February 2022**

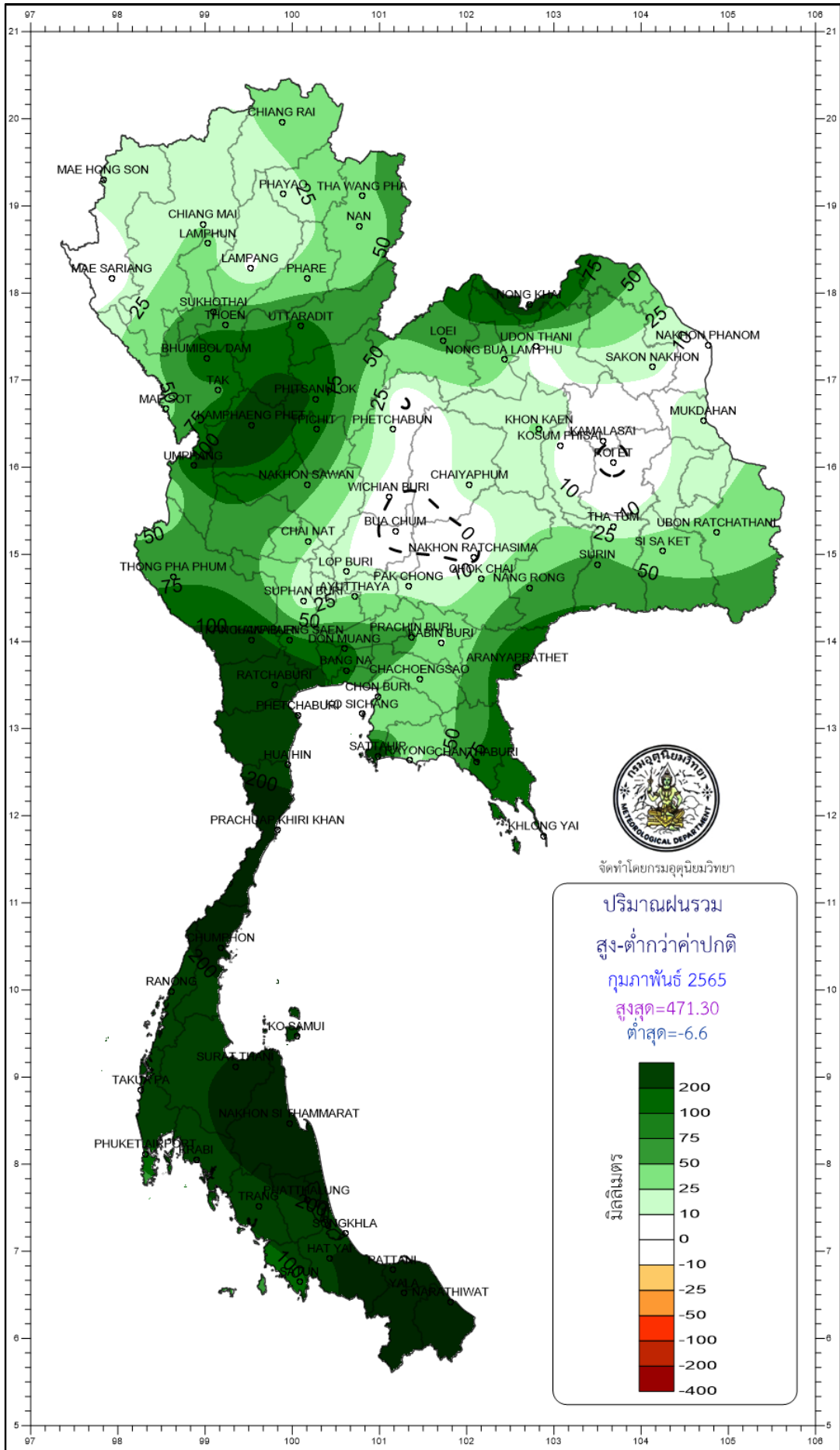
Region	Station	Temperature (°c)		Rainfall (mm)		Accumulative rainfall (mm) Since 1 January	
		Mean	Above or below normal	Actual	Above or below normal	Actual	Above or below normal
North	Chiang Rai	22.0	0.1	41.5	28.8	130.5	101.3
	Mae Hong Son	22.7	0.0	20.3	14.8	32.2	15.7
	Phayao	23.6	0.6	26.6	19.2	56.1	34.4
	Chiang Mai	24.7	0.5	33.9	24.3	60.6	39.7
	Tha Wang Pha	23.8	1.1	53.9	46.2	91.2	68.5
	Nan	24.8	0.9	40.9	32.1	52.1	29.0
	Lamphun	24.4	-0.1	33.3	28.9	59.0	46.1
	Lampang	25.1	0.2	15.0	6.3	50.8	27.4
	Mae Sariang	22.9	0.2	6.8	1.3	24.4	7.9
	Phrae	25.1	0.5	48.8	37.1	74.6	49.5
	Uttaradit	25.9	-0.3	94.0	83.1	104.1	83.4
	Bhumibol Dam	25.3	-1.3	106.4	100.1	108.6	94.1
	Tak	26.1	-1.1	74.8	68.1	75.2	59.5
	Mae Sot	25.0	0.1	46.6	39.8	74.5	60.2
	Umphang	22.9	0.9	114.0	103.8	121.1	102.0
	Phitsanulok	26.4	-0.4	114.6	98.0	116.3	92.7
	Lom Sak	25.9	-0.2	13.5	-2.8	30.0	6.9
	Phetchabun	26.5	0.0	26.3	10.9	39.0	12.8
	Wichian Buri	26.6	-0.9	13.4	0.6	24.6	-2.0
	Kamphaeng Phet	26.2	-0.6	137.6	124.8	152.7	134.6
Northeast	Nong Khai	23.7	-1.3	148.4	131.0	174.6	146.6
	Loei	23.3	-1.0	74.1	60.2	87.5	66.0
	Udon Thani	23.9	-1.3	24.9	3.7	25.2	-2.4
	Nakhon Phanom	23.2	-1.3	21.7	0.4	28.2	3.0
	Sakon Nakhon	22.8	-1.6	38.8	11.4	40.4	6.9
	Mukdahan	23.5	-1.5	36.6	18.6	41.2	20.2
	Khon Kaen	24.6	-1.3	45.2	27.9	49.0	25.7
	Kosum Phisai	25.0	-1.0	20.7	7.0	20.7	0.0
	Roi Et	24.8	-1.0	8.8	-2.5	22.8	4.6
	Chaiyaphum	25.7	-1.0	23.7	16.5	47.8	31.7
	Ubon Ratchathani	25.7	-0.8	42.2	31.3	44.2	30.1
	Tha Tum	25.4	-0.8	23.5	11.6	28.1	7.8
	Surin	25.8	-0.7	71.5	61.9	72.5	56.3
	Nakhon Ratchasima	26.2	-0.8	8.1	-4.6	10.0	-11.3
	Chok Chai	26.1	-0.5	37.9	26.3	38.0	17.7
Nang Rong	25.4	-0.9	71.6	53.9	72.4	49.9	
Central	Nakhon Sawan	27.2	-0.8	71.4	59.1	100.3	82.4
	Bua Chum	26.5	-0.9	2.0	-6.6	67.4	47.5
	Lop Buri	27.7	-0.5	20.5	11.9	24.9	6.6
	Suphan Buri	27.6	-0.1	17.4	11.8	17.8	7.3
	Thong Pha Phum	26.9	0.0	46.5	35.0	48.3	29.7
	Kanchanaburi	27.9	-0.3	130.8	112.5	132.2	106.3
	Bangkok Airport	27.8	-0.8	95.3	83.4	124.4	96.1
	Bangkok Metropolis	28.5	0.0	115.3	93.9	149.7	104.7
East	Prachin Buri	28.2	-0.2	70.6	56.9	77.6	56.2
	Kabin Buri	27.1	-0.6	42.0	22.0	47.7	13.0
	Aranyaprathet	27.8	-0.5	131.1	106.3	140.6	105.2
	Chon Buri	28.1	-0.2	50.6	35.9	52.4	20.1
	Ko Sichang	27.3	-0.4	38.1	18.8	58.6	17.7
	Pattaya	27.1	-0.2	82.0	62.1	132.8	97.4
	Sattahip	27.2	-0.2	165.6	143.6	217.5	162.7
	Rayong	27.7	-0.1	47.3	15.1	94.7	33.2
	Chanthaburi	27.6	0.2	117.2	81.8	136.9	73.5
	Khlong Yai	27.9	0.6	156.1	76.3	208.4	77.5
South (East Coast)	Phetchaburi	27.3	-0.2	158.9	154.7	209.6	188.8
	Hua Hin	27.3	0.0	172.7	158.9	192.6	153.8
	Prachuap Khiri Khan	26.9	0.0	298.8	277.4	306.8	240.0
	Chumphon	26.9	0.1	291.8	240.5	312.5	164.5
	Surat Thani	26.5	-0.2	227.1	209.1	242.9	154.4
	Ko Samui	27.7	0.3	248.8	185.1	275.4	85.2
	Nakhon Si Thammarat	26.7	0.1	481.6	404.8	519.0	179.9
	Songkhla	27.8	0.3	230.4	175.4	322.0	139.8
	Hat Yai Airport	27.0	0.2	231.6	201.5	318.2	200.0
	Pattani Airport	27.0	0.3	370.0	334.0	371.1	240.9
Narathiwat	26.7	0.1	536.1	471.3	565.5	309.4	
South (West Coast)	Ranong	27.5	-0.1	156.8	137.3	170.6	110.0
	Takua Pa	27.3	0.2	212.9	167.9	212.9	105.8
	Phuket	29.3	0.3	100.3	77.0	106.3	33.1
	Phuket Airport	27.9	0.0	115.2	83.9	146.6	49.1
	Ko Lanta	28.3	0.0	112.6	89.2	114.2	61.1
	Trang Airport	27.6	-0.1	160.6	136.3	221.7	140.2
Satun	28.2	0.0	117.9	78.3	119.1	35.9	
	Over the area	26.1	-0.3	102.6	82.3	122.8	72.9
					405%		146%

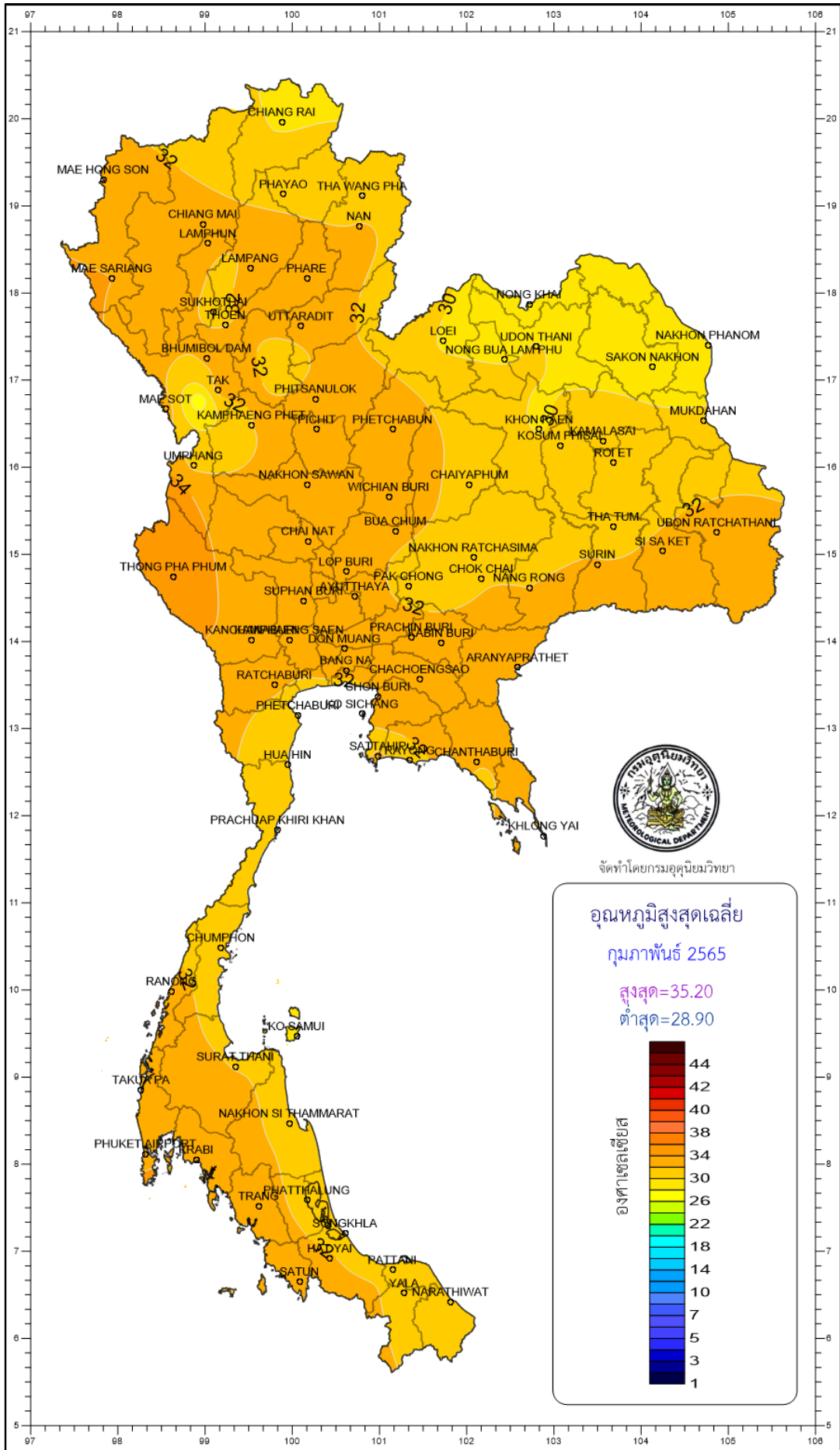
- NOTES : 1) Mean temperature is the average of daily dry-bulb temperature  
2) "T" is trace, rainfall amount less than 0.1 mm.  
3) "blank" is incomplete data  
4) Temperature and rainfall are preliminary data



จัดทำโดยกรมอุตุนิยมวิทยา







จัดทำโดยกรมอุตุนิยมวิทยา

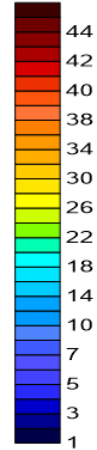
อุณหภูมิสูงสุดเฉลี่ย

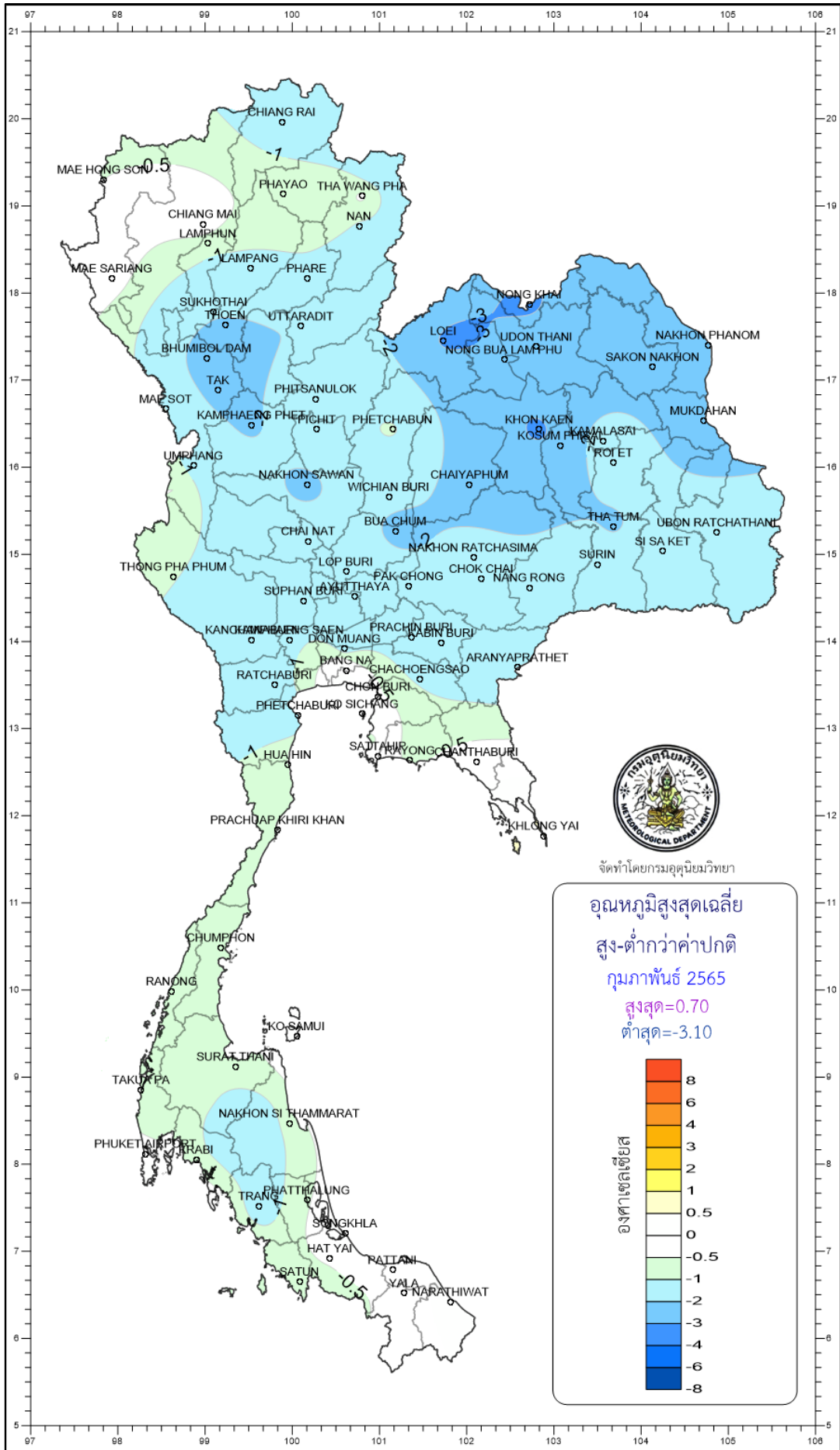
กุมภาพันท์ 2565

สูงสุด=35.20

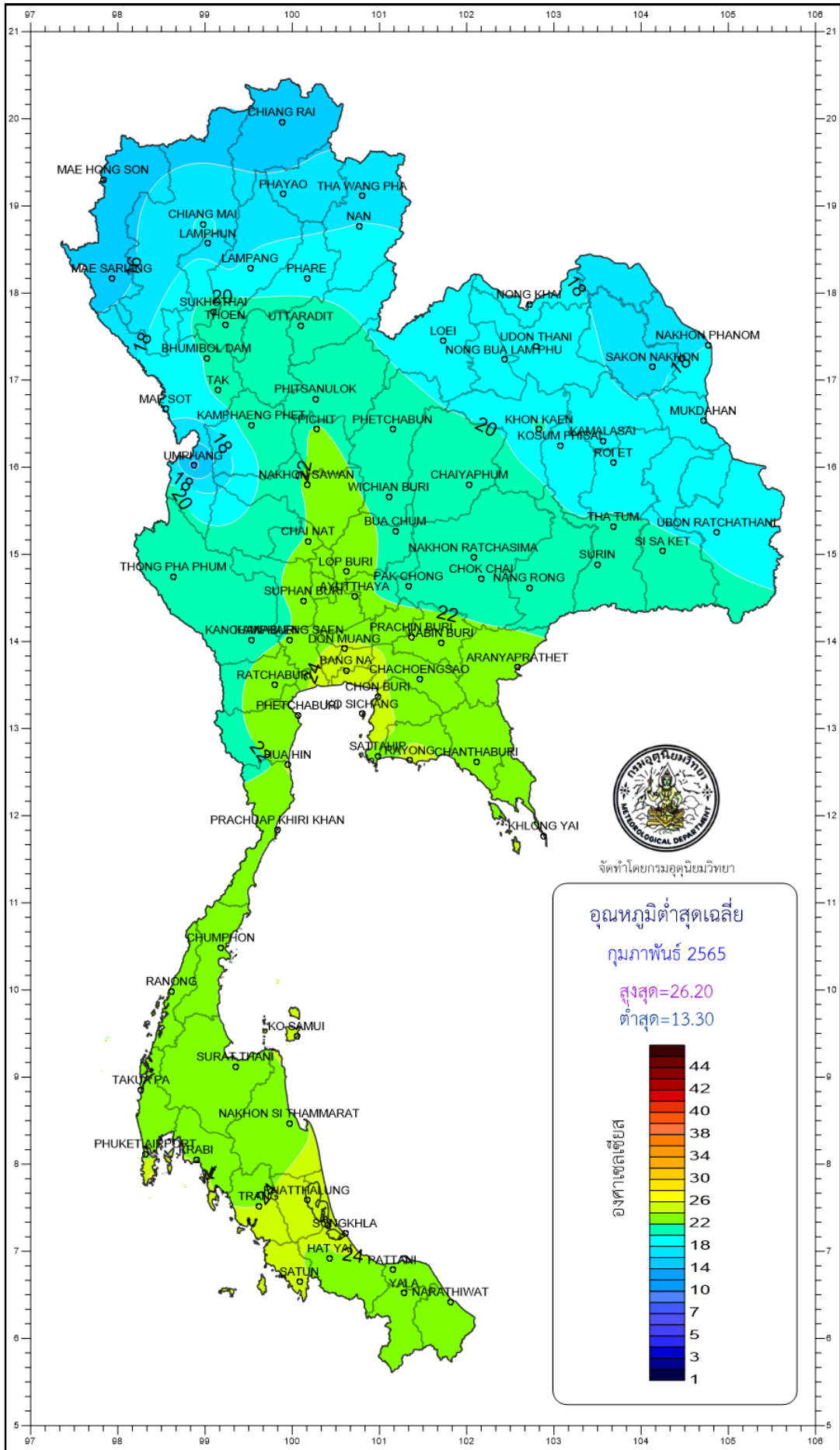
ต่ำสุด=28.90

องศาเซลเซียส





จัดทำโดยกรมอุตุนิยมวิทยา



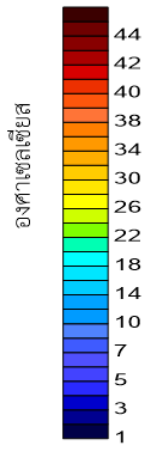
จัดทำโดยกรมอุตุนิยมวิทยา

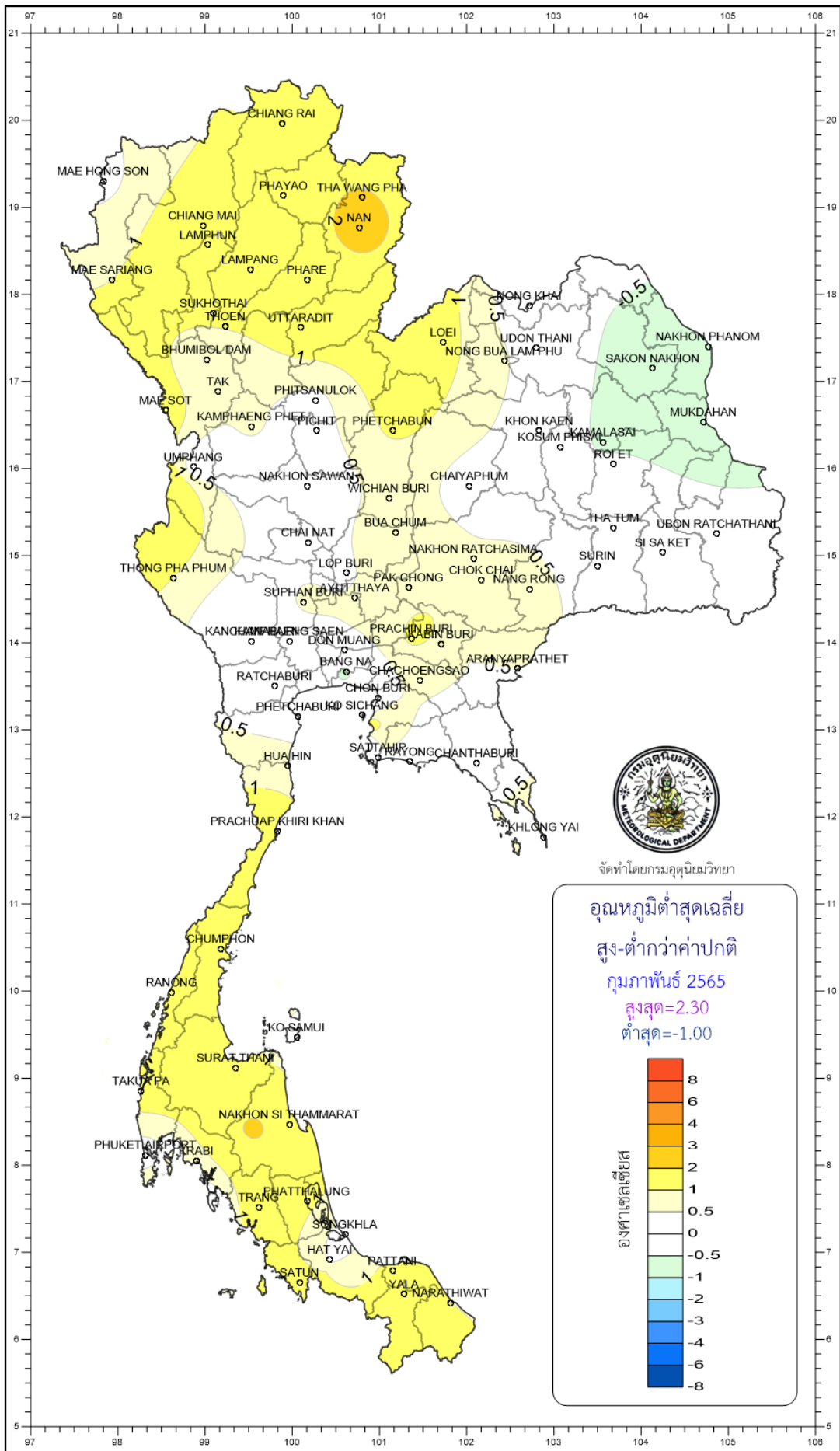
อุณหภูมิต่ำสุดเฉลี่ย

พฤษภาคม 2565

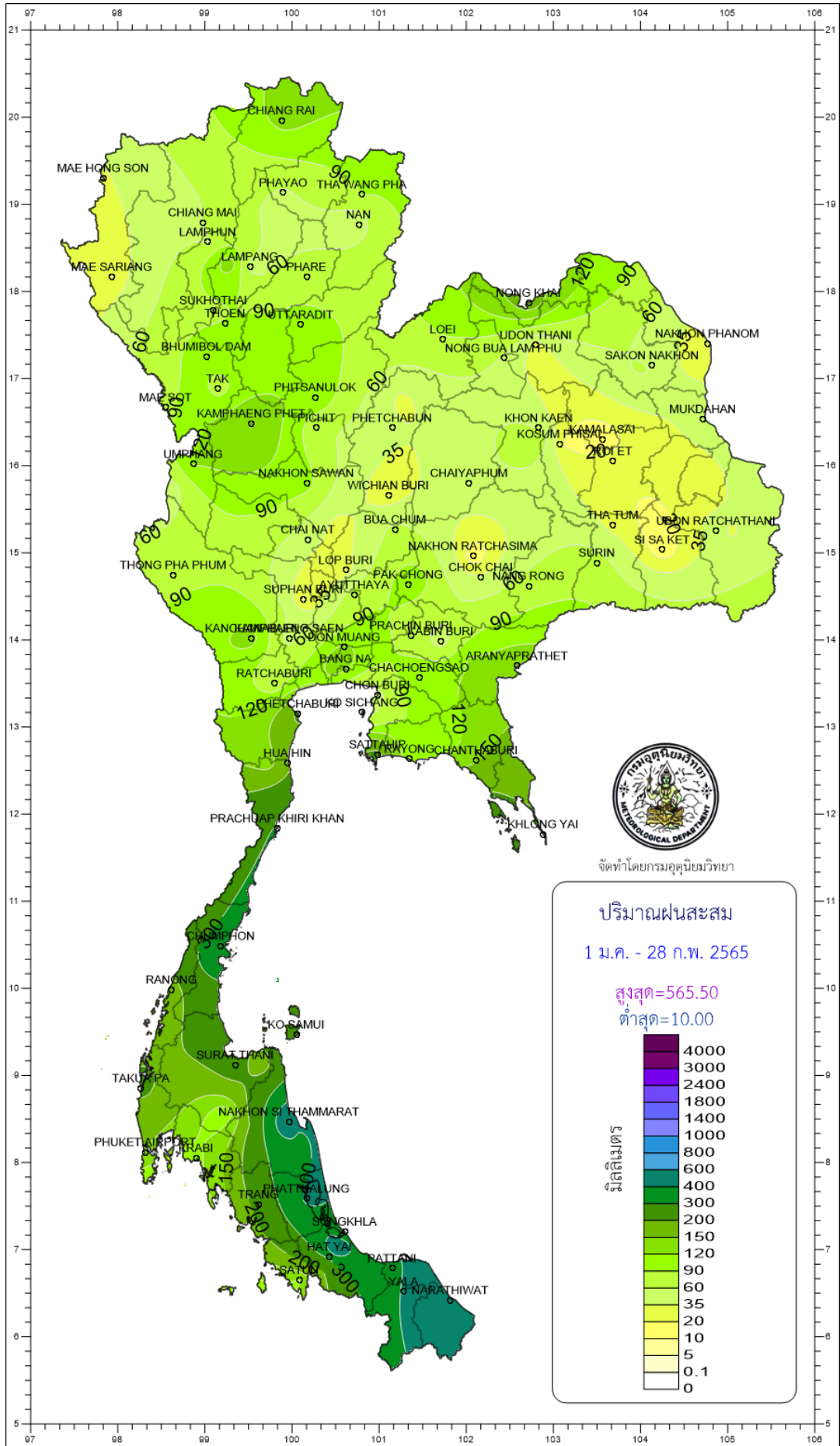
สูงสุด=26.20

ต่ำสุด=13.30









จัดทำโดยกรมอุตุนิยมวิทยา

